

## MHTM™ MicroDrive Accessories

### RFID Access Control (ZKE01)

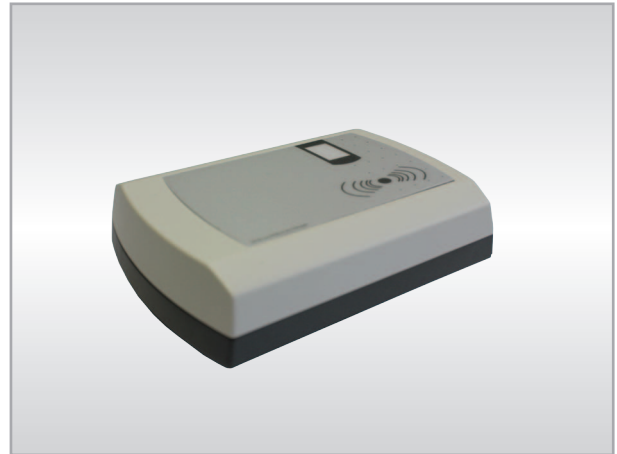
The RFID Access Control is intended to open MHTM™ MicroDrive barriers using a transponder.

The ZKE01 unit is a read-only-terminal with an integrated antenna that can be used as a stand-alone device without any connection to a PC or an additional control unit.

Although the unit is a read-only (RO) terminal, it can read-out the serial numbers of read/write (RW) transponders. Thus, the access control unit can be used in environments where transponders for e.g. locking systems are already in use.

The transponders can be programmed and deleted with a master card / administration card that is shipped with every single unit. Up to 200 transponders (RO, RW or mixed) can be used with one ZKE01 unit.

There are two different transponder models available: a key card (ZK-K01) and a key chain (ZK-A01).



#### Technical data

Body housing	ASA-plastic
Dimensions (LxWxH, mm)	113 x 83 x 24.5
Voltage	12 - 24 V DC
Power consumption max.	1.5 W
Antenna	integrated
Display	2-digit seven-segment display
Digital output	24V / 1.5A
Temperature range	-25° to +70°C
Number of storable transponders	200
Available transponders	Key card (ZK-K01) Key chain (ZK-A01)

#### Supported barrier types

Magnetic.Access	all
Magnetic.Parking	all