



# Magnetic Autocontrol GmbH

Grienmatt 20  
D-79650 Schopfheim  
Tel. 07622 695 644

Job number 5526,0001

Type MicroDrive

MHTM - MicroDrive - switch clock 2-channel  
ZS2K01 24V

Number of pages 4

				07.12.2011
				gp
01	16.04.14	5K14513	gp	
Version	Date	Modification project	Name	00 5K11567

MHTM  
MicroDrive



Cover sheet

5526,0001

# Option 2

inhibit opening loop  
Exit

2020,5492

→ =Ausfahrt-24V\_A / =Ausfahrt/4.0  
→ =Ausfahrt-IN5\_A / =Ausfahrt/4.0

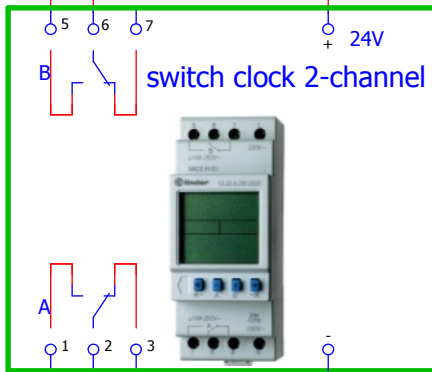
Mounting panel 2

M2

2020,5491

← 24V\_1 / 3.0 =Ausfahrt/4.0  
← 0V\_3 / 3.0 =Ausfahrt/4.0

-A1  
3460,5105



# Option 1

permanent open  
inhibit opening loop  
Entry

2020,5492

→ IN4 / 3.0  
→ IN5 / 3.0  
→ 24V / 3.0

				07.12.2011
				gp
01	16.04.14	5K14513	gp	
Version	Date	Modification project	Name	00 5K11567

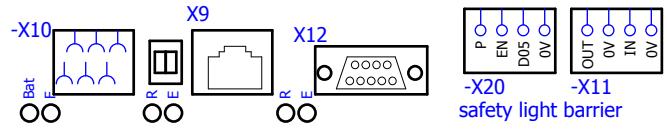
MHTM  
MicroDrive



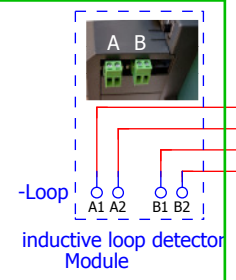
Mounting panel 2  
switch clock 2-channel

5526,0001

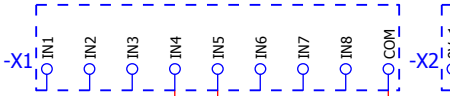
-A2



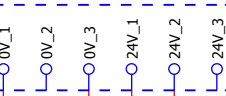
### barrier control MGC



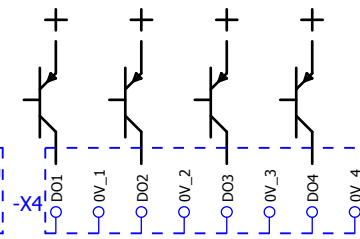
#### Inputs



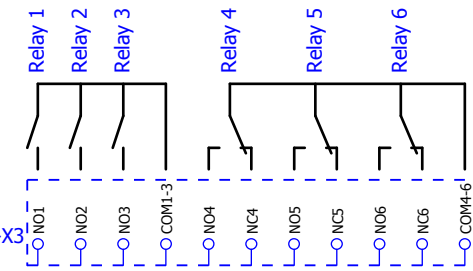
#### 24V DC



#### Transistor Outputs



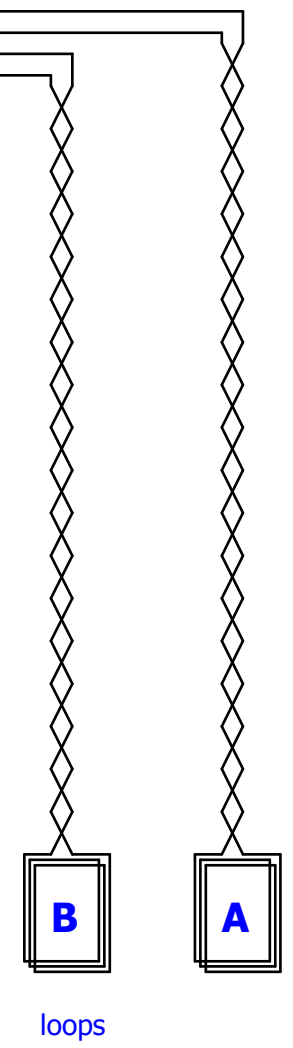
#### Relay Outputs



permanent open  
inhibit opening loop  
Entry

- 2.9 / IN4
- 2.9 / IN5
- 2.9 / 24V
- 2.8 / 24V\_1
- 2.8 / 0V\_3

## Option 1



			07.12.2011
01	16.04.14	5K14513	gp
Version	Date	Modification project	Name
			00 5K11567

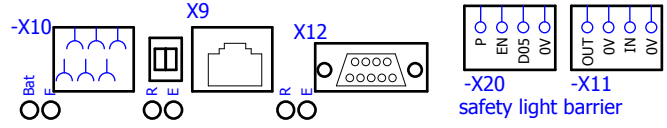
MHTM  
MicroDrive



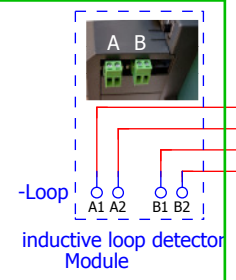
Option 1

5526,0001

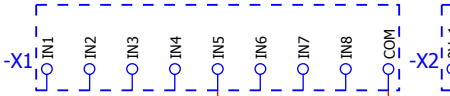
-A3



### barrier control MGC

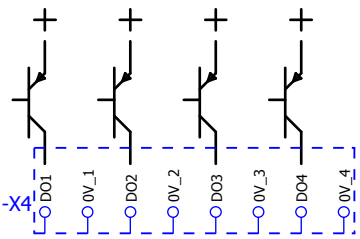


### Inputs

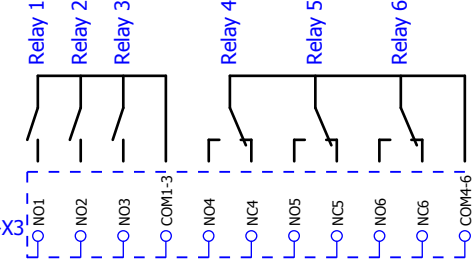


### 24V DC

### Transistor Outputs



### Relay Outputs



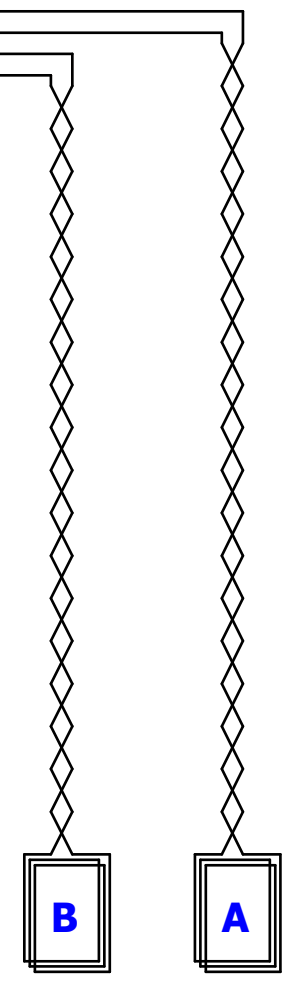
inhibit opening loop  
Exit

=/2.8 / IN5\_A

=/2.8 / 24V\_A

24V\_1=/2.8/

0V\_3=/2.8/



loops

## Option 2

				07.12.2011 gp
01	16.04.14	5K14513	gp	
Version	Date	Modification project	Name	00 5K11567

MHTM  
MicroDrive



Option 2

5526,0001

= Ausfahrt  
+