

STANDARD COLOURS

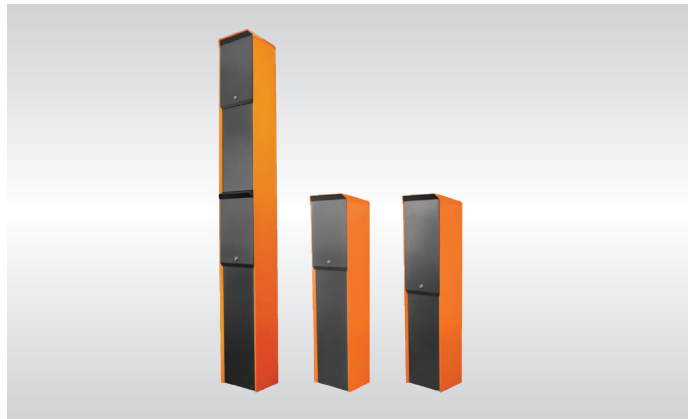
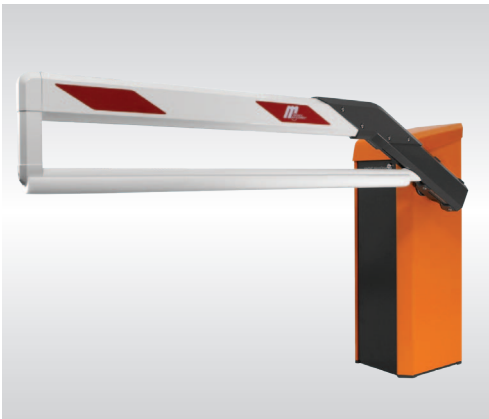
MHTM™ MICRODRIVE AND TERMINAL





Colour description	Orange (RAL 2000)
Processing	Powder-coating
Manufacturer	IGP Pulvertechnik AG
Powder number (Housing)	IGP-DURApol 682SA22770A10
Powder number (Cover)	IGP-DURAFace 581MA20000A00
Standard colour for	All MHTM™ MicroDrive barriers and control columns TERMINAL
Standard colour doors (front and back)	See page 5

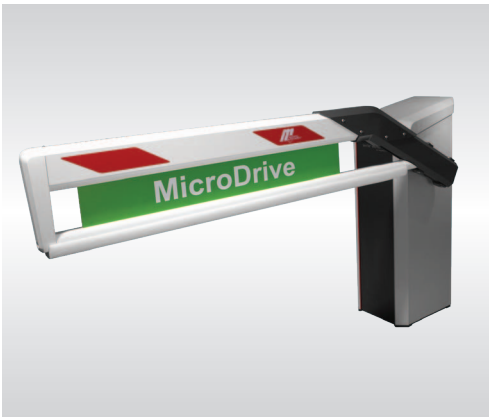
Examples





Colour description	White aluminium (RAL 9006)
Processing	Powder-coating
Manufacturer	IGP Pulvertechnik AG
Powder number (Housing)	IGP-DURApol 682SE90067A10
Powder number (Cover)	IGP-DURAFace 581ME90060A10
Standard colour for	All MHTM™ MicroDrive Pro and Select models and control columns TERMINAL
Standard colour doors (front and back)	See page 5

Examples

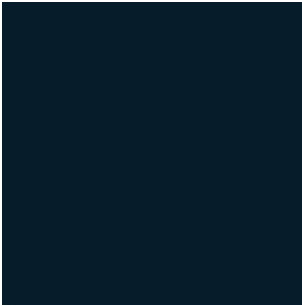




Colour description	Grey aluminium (RAL 9007)
Processing	Powder-coating
Manufacturer	IGP Pulvertechnik AG
Powder number (Housing)	IGP-DURApol 682SE71384A10
Powder number (Cover)	IGP-DURAFace 581ME71384A10
Standard colour for	All MHTM™ MicroDrive Pro and Select models and control columns TERMINAL
Standard colour doors (front and back)	See page 5

Examples





Colour description	Anthracite (similar to RAL 7021)
Processing	Powder-coating
Manufacturer	IGP Pulvertechnik AG
Powder number (front and back)	IGP-DURAFace 5803E 71319A10
Standard colour for	all front and back doors of MHTM™ MicroDrive barriers and control columns TERMINAL.
Note	The telescopically-mounted extendable front panel is only available in standard colour.

Examples



